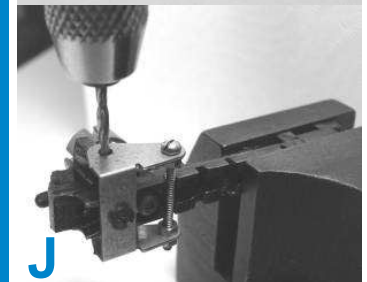
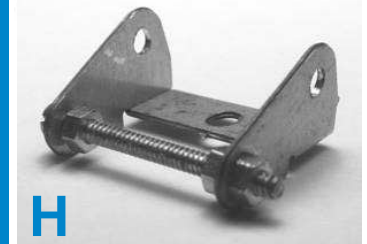
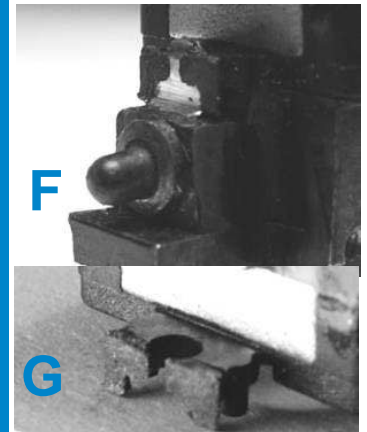
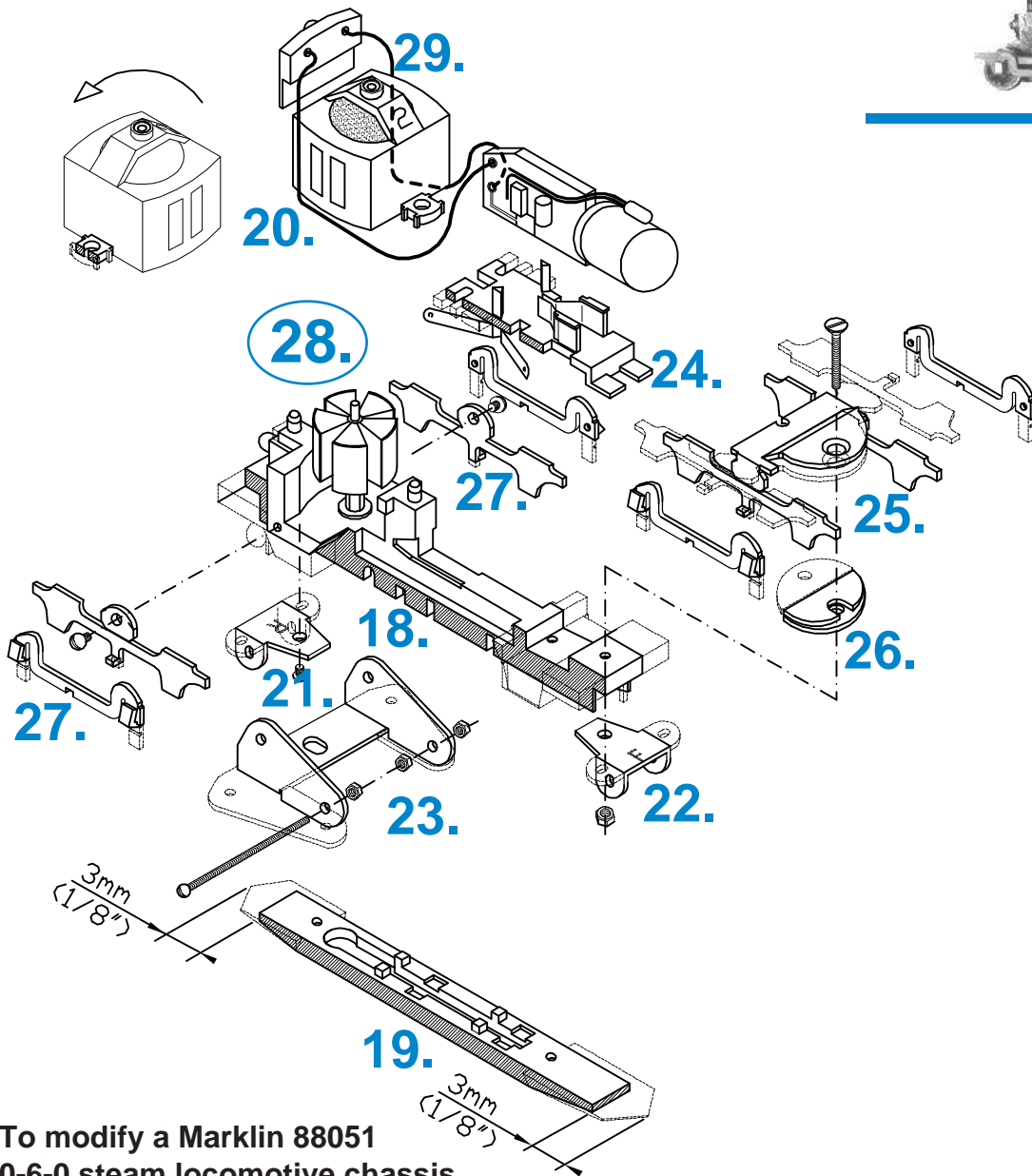
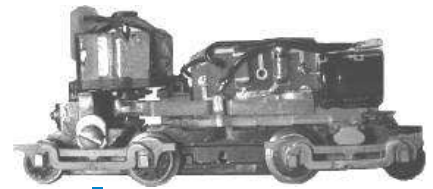


Instructions (chassis)



**To modify a Marklin 88051
0-6-0 steam locomotive chassis
(chassis not included)**

18. Remove all attached parts of chassis, including the magnet housing. Mask armature, file both sides of frame flat as shown (hatched). The filed flat surface should be in one plane with the original center part of the frame. The "L" shape cast metal under the motor should not be touched. File the upper portion of rear magnet housing bracket flat with the back edge of housing holding pin (F). Cut off both cast metal coupler shafts.
19. Cut / file off 3 mm (1/8") from both ends of gear cover plate. Screw plate back to chassis, file both sides of plate flat with filed part of chassis, then file coupler housing ends flat with shortened ends of plate. Remove gear cover plate, file the bottom of both coupler housings flat .
20. Cut back magnet housing's rear clip to the edge of hole (to align with filed surface of bracket. (G)
21. Bend 90° inwards the round ears of rear wheel holding bracket, lightly solder corners. Place bracket into coupler housing, using the bracket as drilling template, drill a #56, approximately 2.5 mm (3/32") deep hole. Thread hole with 0-80 tap.