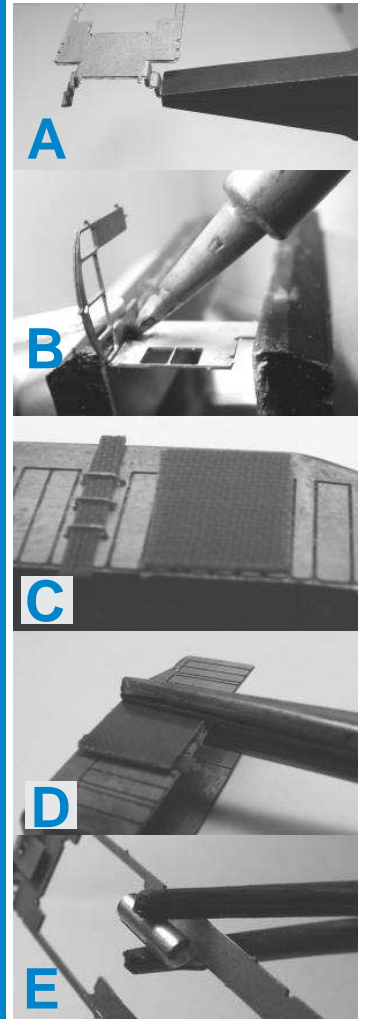
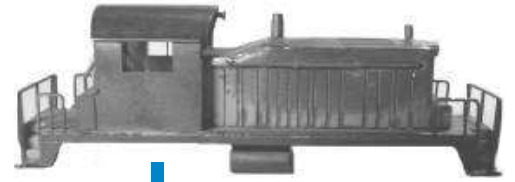
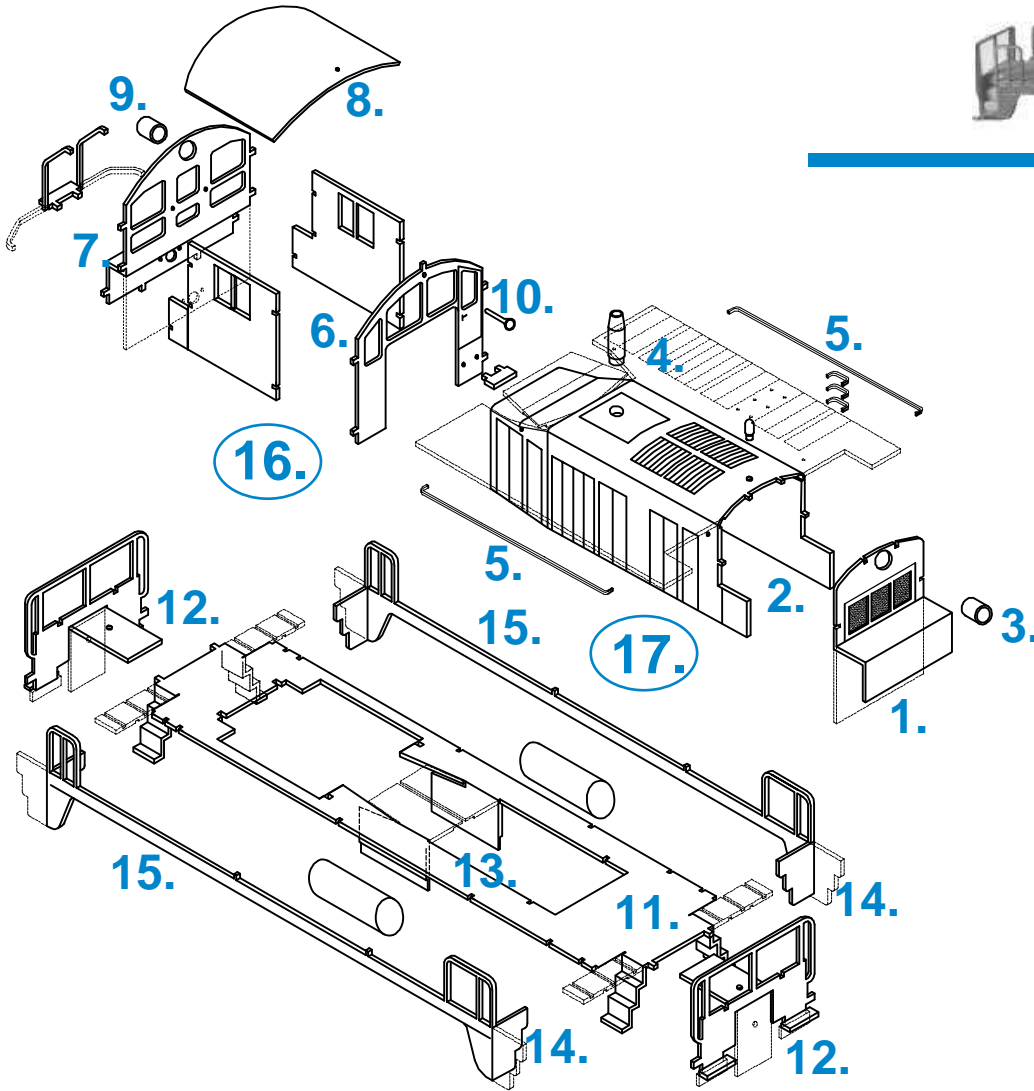


Instructions (shell)



This instruction sheet has been designed for easy use. The numbered steps coincide with the blue numbers on the illustrations. Before cutting the etched brass parts from the fret, carefully study the drawings above. Many parts have locator pins which continue on as sprues that hold the fret together. These sprues should be cut at the etched line. The small locator pins will help to assemble the parts accurately to minimize the chance for errors. The small grab bars have no suspension sprues, they should be cut off with small hobby knife, face down over a cuttingboard. Except for the two threaded holes located on the coupler brackets on the platform ends (Part #13) and the small holes for the grab irons, all etched holes need to be re-sized with the appropriate drill or reamer.